



Progetto di completamento delle Ex-Scuderie mediche di Seravezza (LU)

Progetto Esecutivo

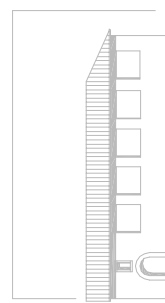
Proprietà: Comune di Seravezza

Progettista responsabile: Arch. Nicola Gallo

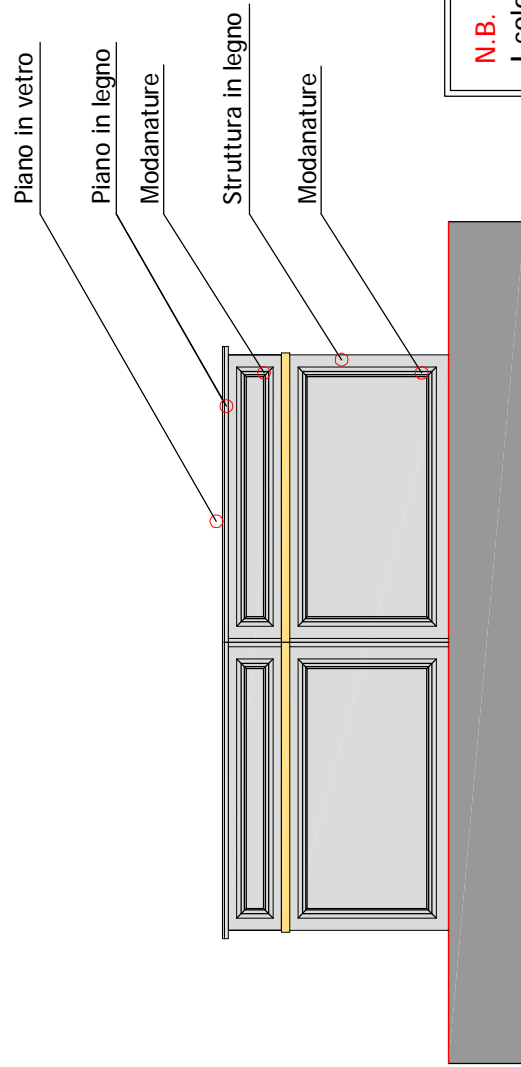
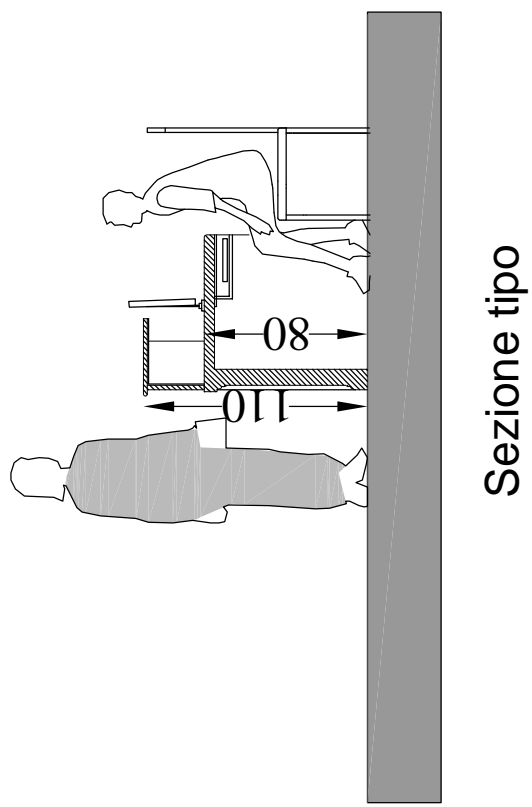
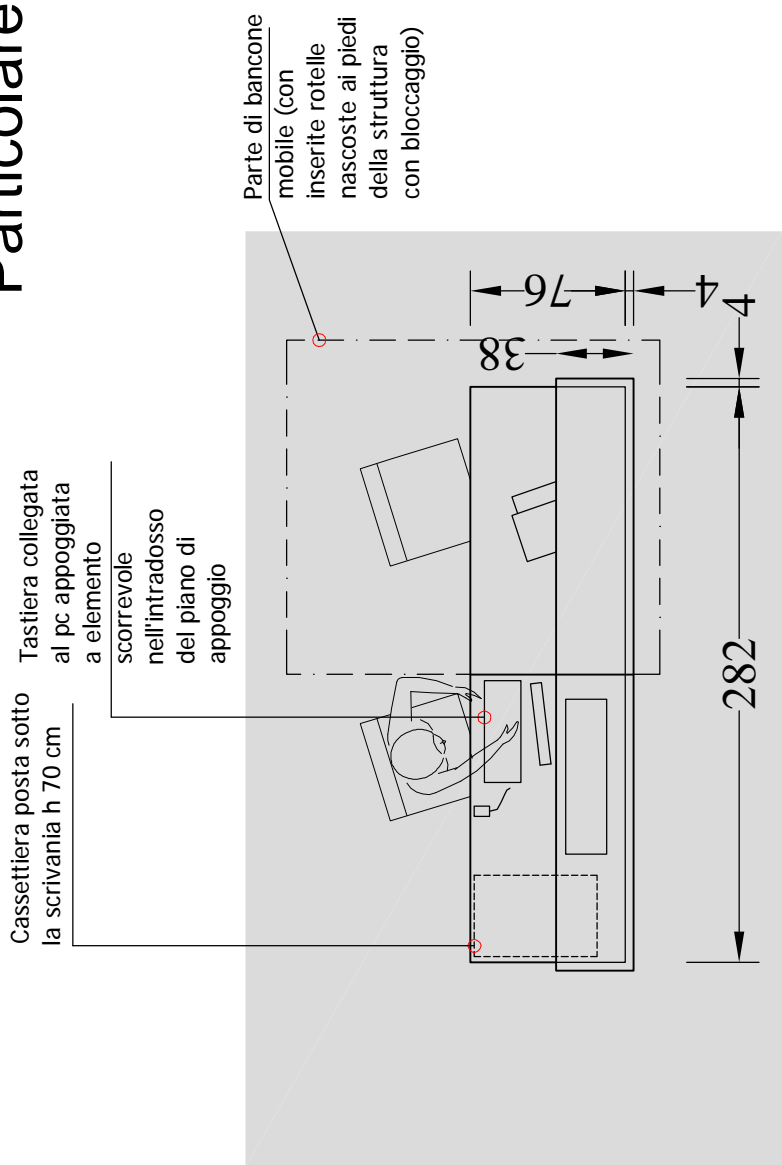
Collaboratori: Geom. Valentina Spalierno

Particolare
Tavolo
reception

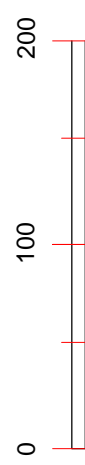
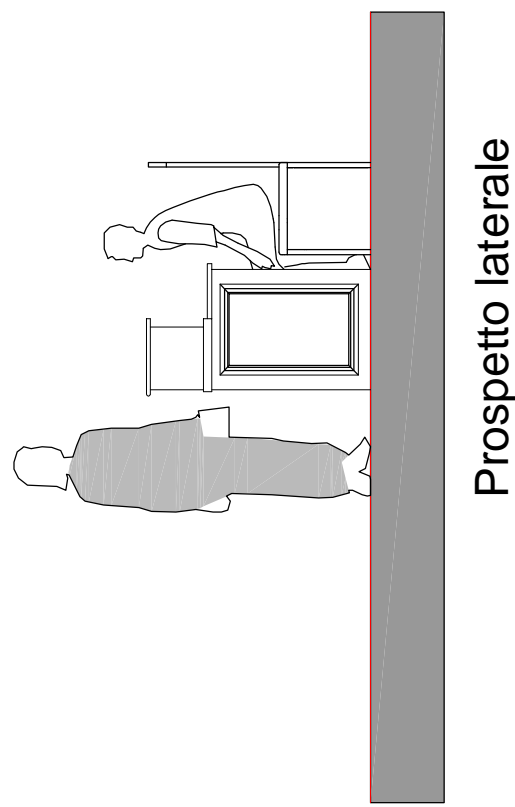
Tav. 1.1



Particolare tavolo reception



N.B.
I colori sono indicativi e saranno esclusivamente a scelta della D.L.



Scala